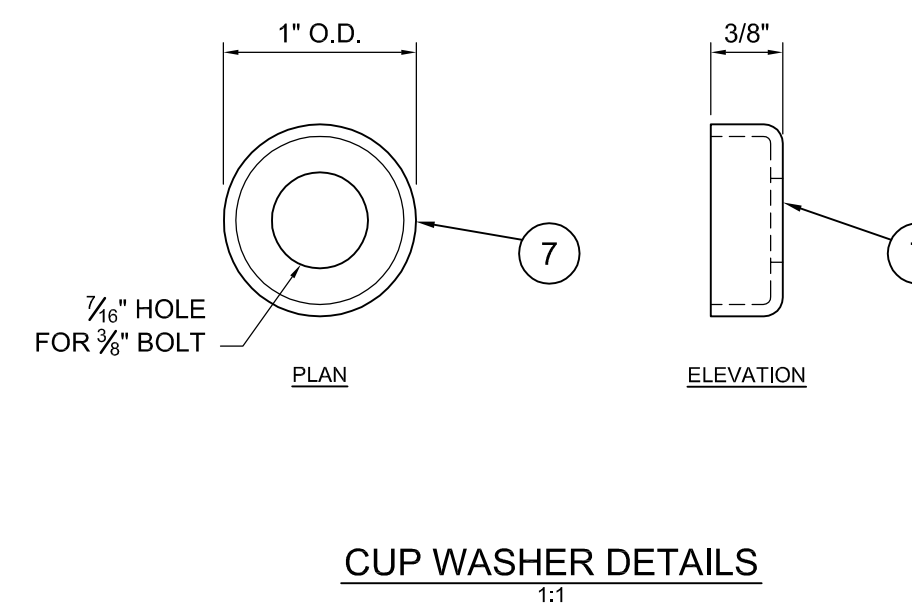
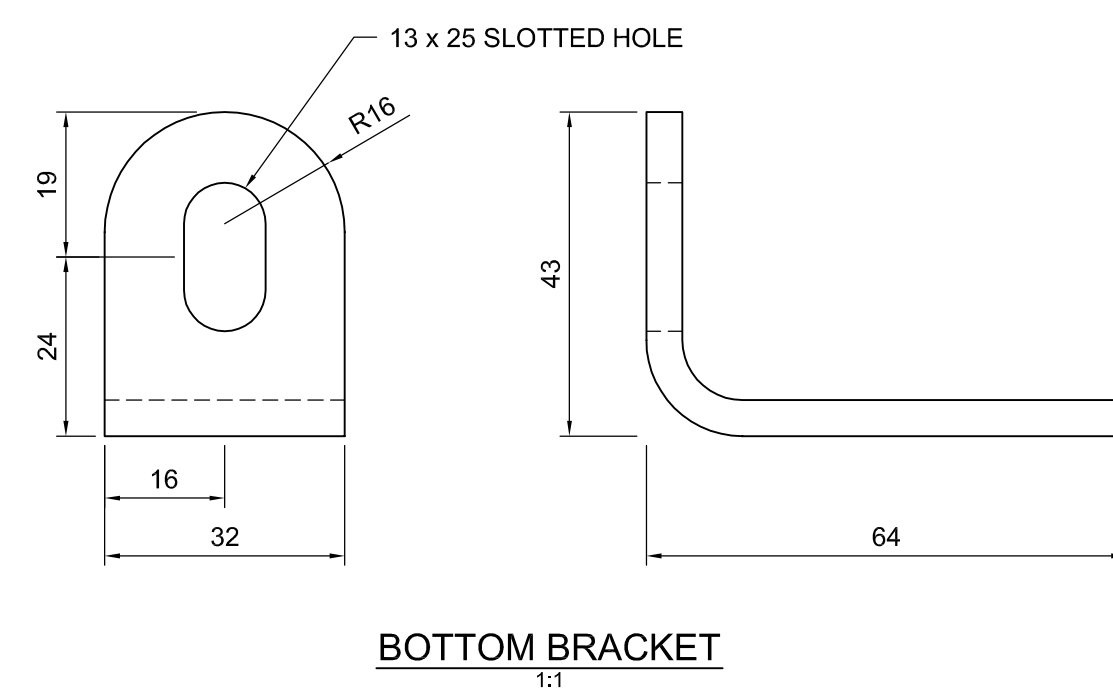
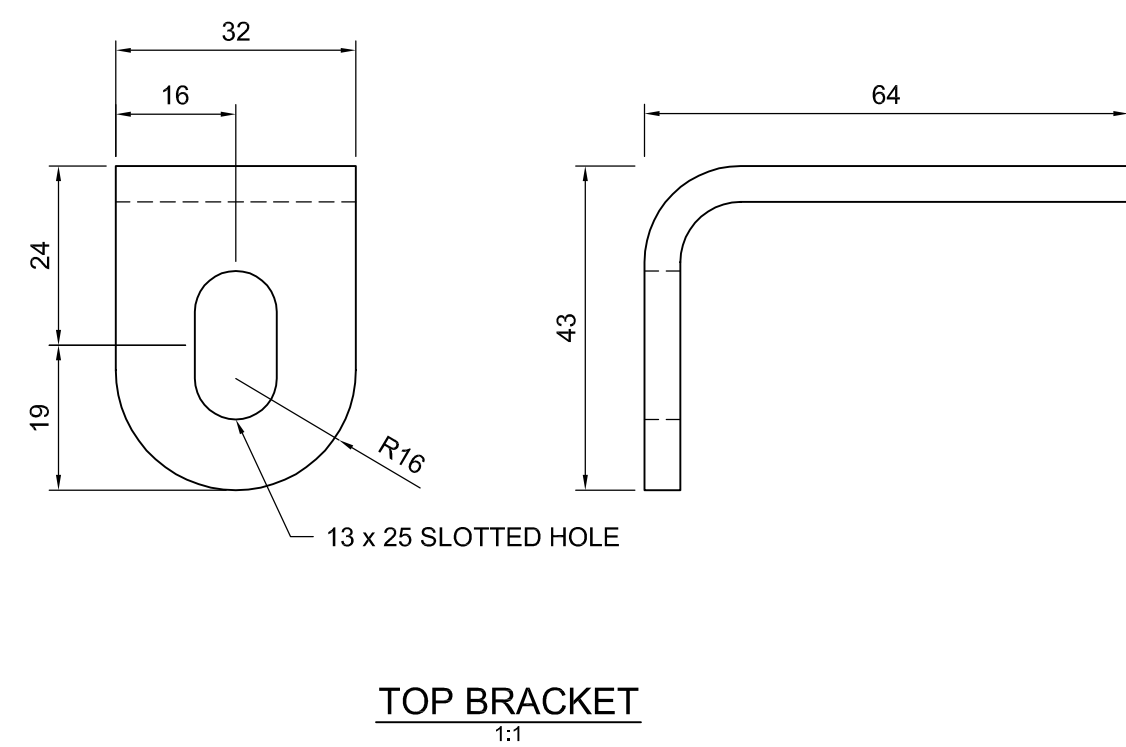
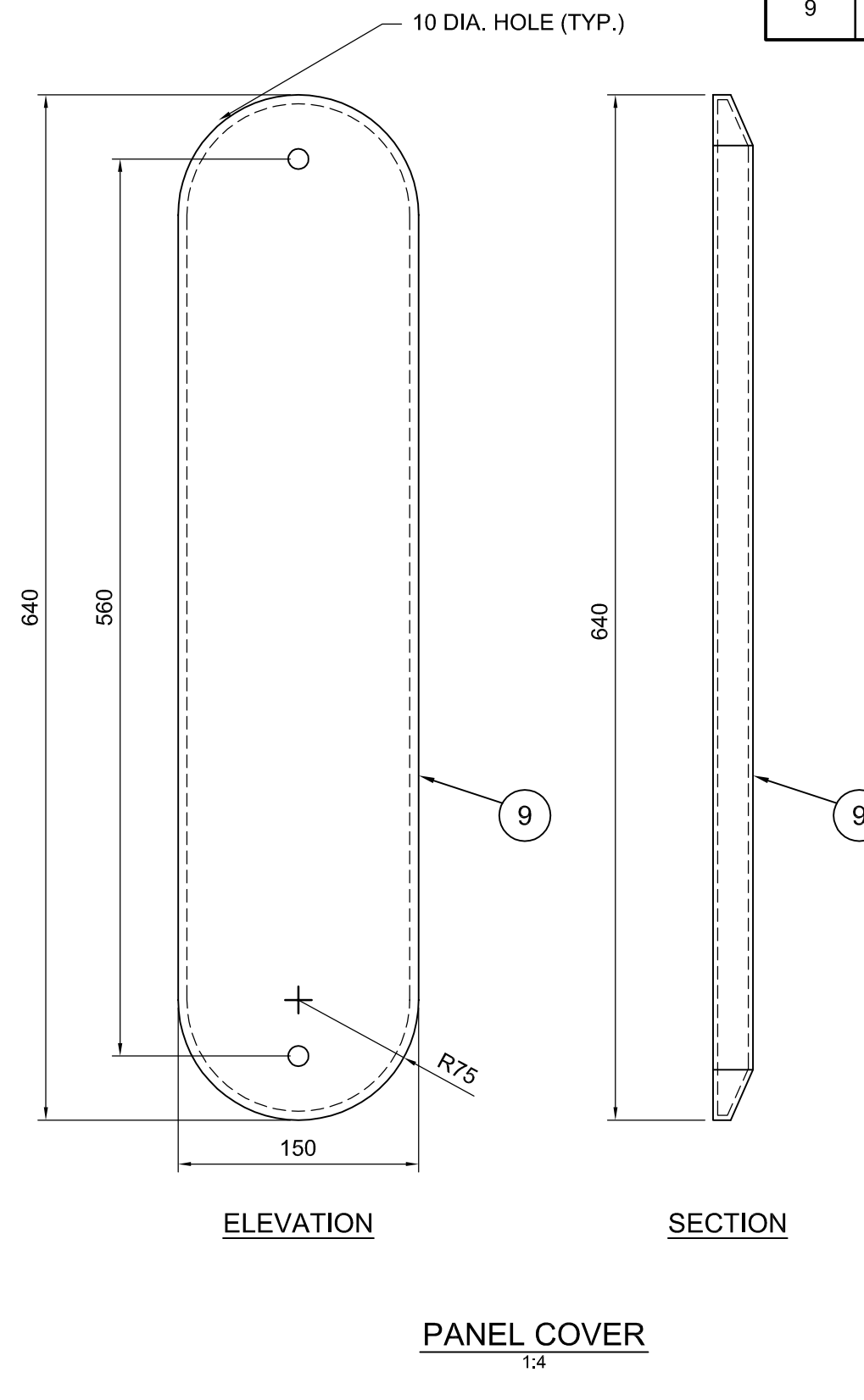
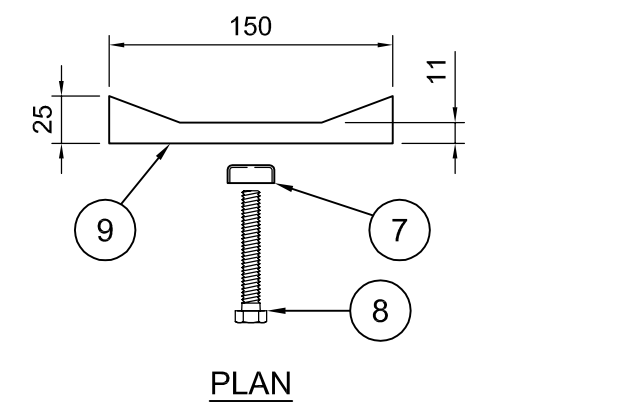
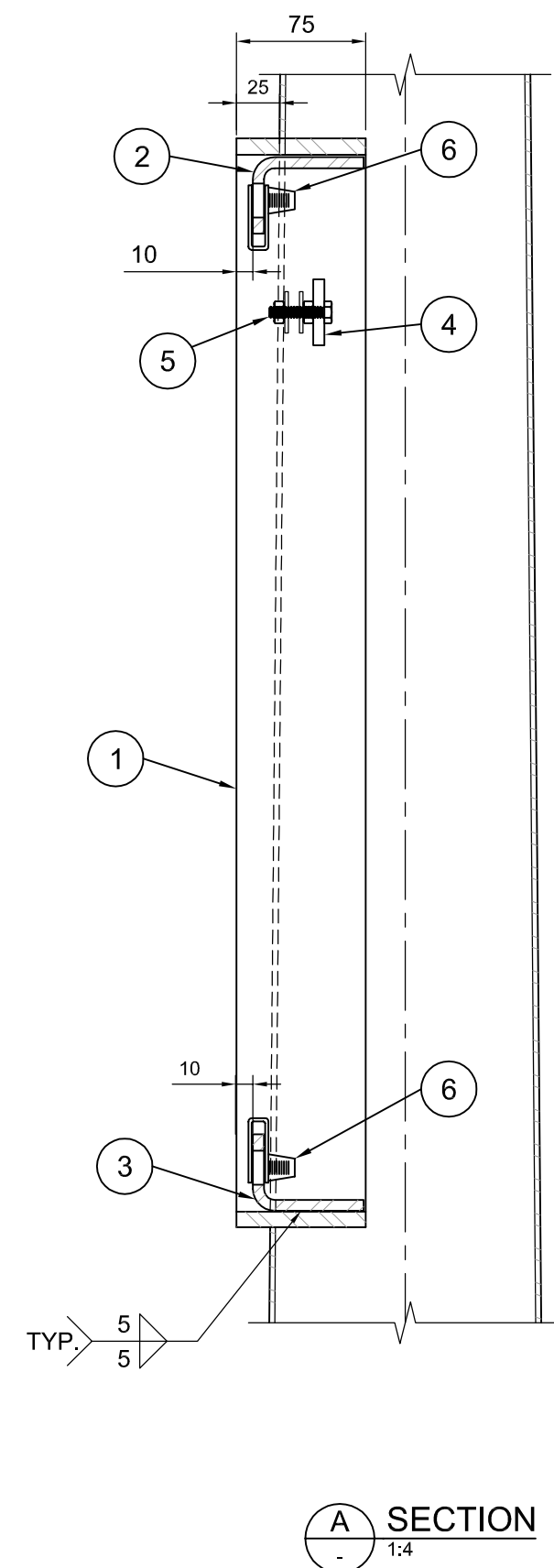
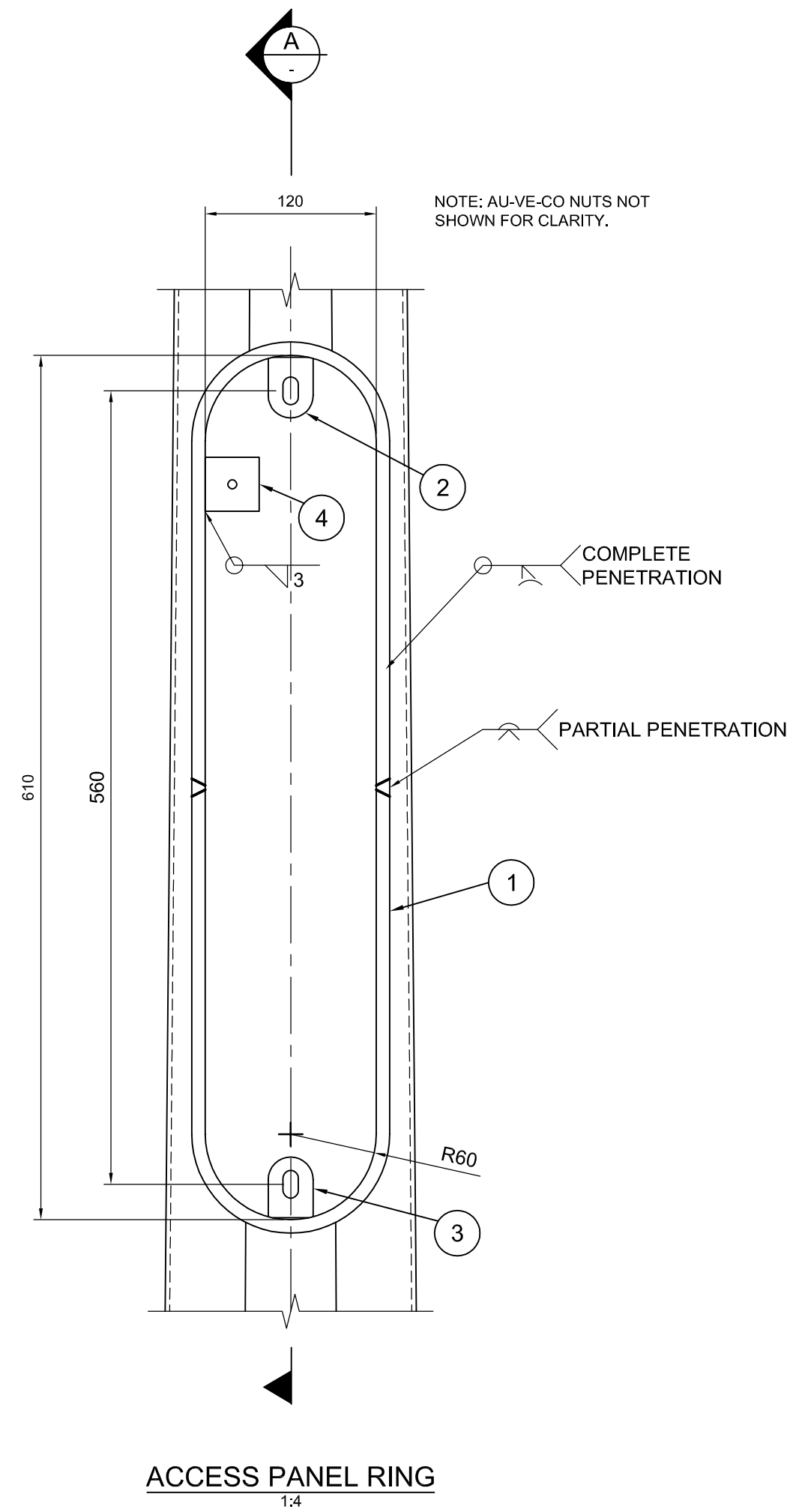


**BILL OF MATERIALS**

MK. NO.	QTY.	DESCRIPTION	SIZE	MATERIAL
1	2	ACCESS PANEL HALF-REINFORCING RING	9.5 x 75 x 686	CSA G40.21 300W
2	1	TOP COVER MOUNTING BRACKET	4.76 x 32 x 107	CSA G40.21 300W
3	1	BOTTOM COVER MOUNTING BRACKET	4.76 x 32 x 107	CSA G40.21 300W
4	1	GROUNDING PLATE	6.35 x 40 x 40	CSA G40.21 300W
5	1	HEX BOLT (GROUND LUG) C/W 2 HEX NUTS & 2 FLAT WASHERS	1/4" - 20 UNC FULL THREAD x 2" LONG	ASTM F593 TYPE 316
6	2	AU-VE-CO NO. 10055 NUT OR EQUAL	3/8" - 16 UNC	STEEL PLATED
7	2	CUP WASHER	16 GA.	ASTM B209 GR. 3003-H14
8	2	HEX BOLT C/W 20 O.D. FLAT WASHER	3/8" - 16 UNC FULL THREAD x 6S LONG	ASTM F593 TYPE 316
9	1	ACCESS PANEL COVER	-	NON-METALLIC

**NOTES:**

- ALL MATERIALS, EXCEPT STAINLESS STEEL ITEMS, SHALL BE HOT DIP GALVANIZED IN ACCORDANCE WITH ASTM A123 (LATEST REVISIONS) WITH NET RETENTION OF 610 gm<sup>2</sup>.
- GRIND ALL SHARP POINTS AND EDGES.
- PACKAGE AND DELIVER FOLLOWING COMPONENTS SEPARATELY:
  - PANEL COVER
  - HEX GROUNDING BOLT C/W NUTS AND WASHERS
  - PANEL COVER HEX BOLTS C/W FLAT WASHERS AND CUP WASHERS
  - AU-VE-CO NUTS



B.M. ELEV.	DESIGNED BY	KNL				<b>ACCESS PANEL ASSEMBLY</b>	CITY DRAWING NUMBER	S-SD-18
	DRAWN BY	KNL					SHEET	18 OF 18
	CHECKED BY	SSR	RELEASED FOR CONSTRUCTION	CONSULTANT PROJECT NUMBER	18-7248	CONSULTANT DRAWING NUMBER	N/A	
	APPROVED BY	-	DATE					
	HOR. SCALE	AS SHOWN						
	VERTICAL SCALE	AS SHOWN						
1	ISSUED BY DILLON CONSULTING	07/11/18	KNL					
NO.	REVISIONS	DATE	BY	DATE				

C:\projects\working\_directory\projects\_2018\4060\dms11050\187248-ACCESS\_PANEL\_DETAILS.dwg